

WOODHAVEN

1470 & 1472 Angle-Ease™

or

576 & 577 Angle-Ease™

Owners Manual

U.S. Patent #6,742,558

Please Read Carefully!



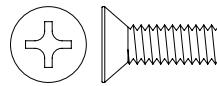
Additional Parts List:

Parts listed below are not shown in the hardware drawings. Refer to photos in the instructions:

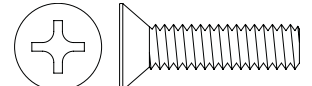
| Part | Description | Quantity |
|---|--|----------|
| 1470AS | Side/Arm Assembly, pair | 1 |
| 1470C | 7-1/2" Double Track..... | 2 |
| 1475 | Height Adjuster (in it's own package)..... | 1 |
| <i>In addition, you will get ONE of the motor blocks and plates below, depending on the Angle-Ease model you purchased:</i> | | |
| 1470B | 3.5" Motor Block..... | 1 |
| 1472B | 4.2" Motor Block | 1 |
| 1470P | Angle Ease Router Table Plate | 1 |
| 576P | Horizontal Table Angle-Ease Plate..... | 1 |

The Angle-Ease fits motors from these routers:

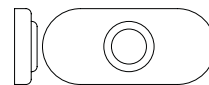
| Router Model | FITS 3.5" ANGLE-EASE | FITS 4.2" ANGLE-EASE |
|-------------------|----------------------|----------------------|
| Porter Cable 7518 | No | Yes |
| Milwaukee 5625 | No | W/ Shim |
| Porter Cable 892 | Yes | W/ Adapter R1 |
| Porter Cable 690 | Yes | W/ Adapter R1 |
| DeWalt 616/618 | Yes | W/ Adapter R1 |
| Bosch 1617/1618 | Yes | W/ Adapter R1 |
| Makita RF1100 | No | W/ Adapter R2 |
| Hitachi M12VC | No | W/ Adapter R3 |
| Ridgid 2900/2930 | No | W/ Adapter R4 |



| Part# | Description | Qty. |
|-------|-------------|------|
| MF010 | 3/4" Screw | 8 |



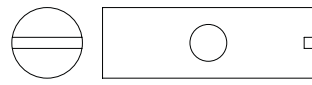
| Part# | Description | Qty. |
|-------|-------------|------|
| MF015 | 1" Screw | 6 |



| Part# | Description | Qty. |
|-------|-------------|------|
| 5760B | Oval Nut | 12 |



| Part# | Description | Qty. |
|---------|-------------|------|
| BUSH002 | 1/4" Spacer | 4 |



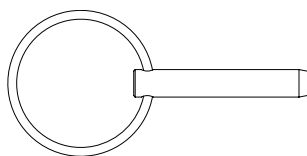
| Part# | Description | Qty. |
|-------|-------------|------|
| 5791B | Barrel Nut | 3 |



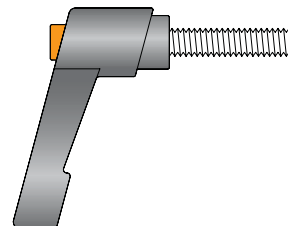
| Part# | Description | Qty. |
|-------|--------------|------|
| WN001 | Nylon washer | 4 |



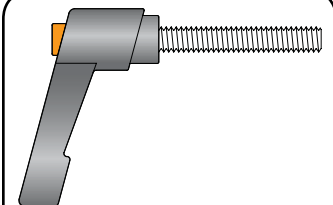
| Part# | Description | Qty. |
|-------|-------------|------|
| WB002 | Washer | 4 |



| Part# | Description | Qty. |
|----------|-------------|------|
| Ringpin1 | Pin | 2 |



| Part# | Description | Qty. |
|-------|---------------|------|
| 5863 | Knob - 1-1/8" | 2 |



| Part# | Description | Qty. |
|-------|---------------|------|
| 5864 | Knob - 1-5/8" | 2 |

BEFORE BEGINNING

Identify and verify that you have all the parts listed. Read the instructions at least once, familiarizing yourself with the parts, before beginning assembly. You'll need two 7/16" wrenches, a #3 Phillips screwdriver and a flat blade screwdriver.

ASSEMBLY

Find the side/arm assembly (**1470AS**) that has the arm with the squared-off corner. Get the adjuster arm (**1475A1**) from the **1475 Height Adjuster** package and attach it to the squared-off arm as shown, using two 3/4" screws (**MF010**). Pivot the arm as necessary to access the lower mounting hole in the arm. Set the remaining height adjuster parts and hardware aside until later. *See fig. 1.*

Take both side/arm assemblies and align the pointer in the arm with the 10° mark on the scale on the top of the side. Insert a pin (**Ringpin1**) through the 10° hole in the side and into the hole in the arm. *See fig. 2.*

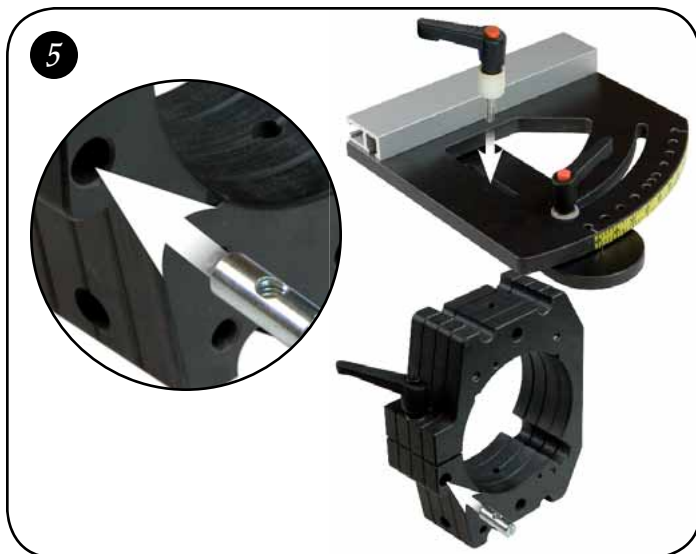
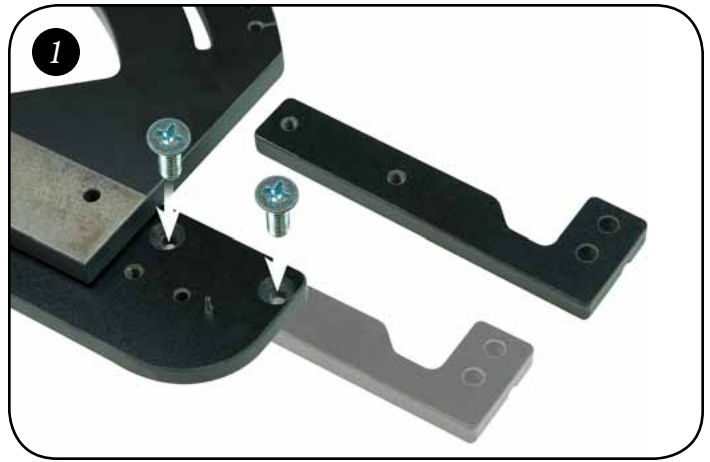
Install a washer (**WB002**) and a nylon washer (**WN001**) on the stud of the knobs (**5863**). Slide another nylon washer (**WN001**) between the arm and side. A credit card can help position the washer. The washer must be aligned with the curved slot in the side and the threaded hole in the arm. Insert the stud of the knob thru the curved slot in the side, screwing it into the arm, then tighten the knob. *See fig. 3.*

Insert 1" screws (**MF015**) thru the three countersunk holes in each side and start an oval nut (**5760B - flat side first**) on each screw. Slide a 7.5" deluxe track (**1470C**) on to the oval nuts on each side. Center the deluxe track on the side, check the side for square on a flat surface and tighten the screws. *See fig. 4.*

Remove the pin from each arm, loosen the handle and rotate the arm to the 0° mark on the side, then reinstall the pin and tighten the knob.

ATTACH ROUTER BLOCK

Set the router block on end with the clamping knob in the router block (**1470B or 1472B**) facing the bottom. Insert a barrel nut (**5791B**) in the hole in the face of the router block near the end. Use a flat blade screwdriver to align the threaded hole in the barrel nut with the cross hole in the router block. *See fig. 5.*



Install a washer (**WB002**) and two 1/4" spacers (**BUSH002**) on the knobs (**5864**). Using the side/arm assembly with the height adjuster arm attached to it, set the arm in the groove in the router block. Install the ratchet handle thru the slot in the arm, screwing it into the barrel nut. Slide the router block as far down on the arm as possible (away from the height adjuster arm) and tighten the knob. Flip the assembly over and connect the remaining side/arm assembly to the opposite side of the router block in the same manner. *See fig. 5 & 6*

ATTACH ASSEMBLY TO PLATE

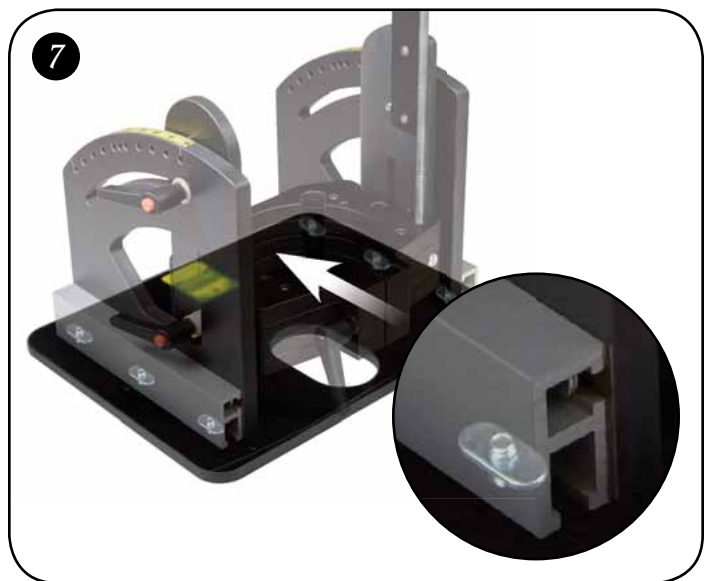
Insert 3/4" screws (**MF010**) thru the six countersunk holes in the router plate (**1470P** or **576P**) and start oval nuts (**5760B - flat side first**) on the ends of the screws. Line the oval nuts up with the T-slot in the double tracks and slide the assembly on to the oval nuts.

If you have the **1470P** plate, position the assembly so the back edge of the sides are 11/16" from the edge of the plate and tighten the screws. The opening in the router block should be over the bit opening in the router plate. *See fig. 7.*

If you have the **576P** plate, position the assembly so the back edge of the sides are flush with the edge of the plate and tighten the screws. The opening in the router block should be over the bit opening in the router plate. *See fig. 7.*

INSTALL HEIGHT ADJUSTER

Install a barrel nut (**5791B**) in the hole in the front of the router block. Use a flat blade screwdriver to align the threaded hole in the barrel nut with the cross hole in the router block. Get the 1475 Height Adjuster package. Spread the two nylon washers on the threaded rod of the height adjuster (**1475B**) apart enough so the rod slips in the groove in the adjuster arm (installed earlier) and the washers are on each side of it. Continue screwing the threaded rod into the barrel nut until the nylon washer on the top of the adjuster arm is snug against the top of the adjuster arm. *See fig. 8.*



Place the arm plate (1475A2) with its groove covering the threaded rod and fasten it to the adjuster arm using the 3/4" screws (5771B). Align the top and bottom edge of both parts before tightening the screws. *See fig. 9.*

Adjust the two nuts on the threaded rod, along with the washers, against the underside of the adjuster arm. Tighten the nuts against each other when you have adjusted the up/down slop out of the height adjuster. *See fig. 9.*

ROUTER INSTALLATION

Loosen the clamp handle in the router block and insert your router in the router block so the end of the motor is flush with the router block, or protruding out past it. **The router motor should always be fully inserted in the router block! Never insert a router motor partially in the router block!** The router motor can be repositioned anywhere in the motor block as long as it is completely in the motor block at all times. Tighten the clamp handle just enough to hold the router motor. Do not over-tighten or you may damage your router. *See fig. 10.*

ANGLE SETTINGS

There are pin settings at 0, 5, 10, 15, 20, 22-1/2, 25, 30, 35, 40 & 45 degrees, or you can set your desired angle using the scale on top of the sides as a guide. To set an angle, remove the two pins (if used), loosen the two angle adjustment knobs and pivot the router to the desired angle. Replace the pins (if the angle is one of the pin settings above) and tighten the knobs.

Angle settings other than those provided can be set using a drafting square or bevel gauge placed between the plate and the face of the router block.

HEIGHT ADJUSTMENT

IMPORTANT!! Loosen the height knob nearest the Height Adjuster just 1/4 to 1/2 of a turn and loosen the opposite height knob 2 full turns. Re-tighten the knob nearest the Height Adjuster first, then re-tighten opposite knob.

Turn the crank handle on the Height Adjuster to move the router up or down. If you cannot achieve the desired height, you may have to reposition the router in the router block (see router installation section above).

USING THE ANGLE EASE

There are two ratchet knobs for locking the height and two for locking the angle. Perform one of these adjustments at a time instead of attempting both adjustments at the same time. Make sure your bit is locked securely in the router collet and that all knobs are tightened securely before using.

Depending on your table opening size, you may have to set the Angle-Ease at 0° degrees to insert it in your router table.

To reduce the risk of injury we recommend that you tilt the cutter into the fence (or table) hiding more of the cutter compared to tilting the cutter away from the fence (or table) and exposing more of the cutter.

